

[View this email in your browser](#)



Preparing for 2025



The year has barely begun, and already the devastating wildfires in Los Angeles have reminded us how quickly disaster can strike at any time of year. As we watched these events unfold, it's a stark reminder that preparation is key. Wildfire season doesn't wait—now is the time to take action in our own communities. Our communities need to focus on practical steps to reduce risk, strengthen defensible space, and ensure we're ready before the next fire threatens our homes. Let's make 2025 the year of preparedness!

Our next Public Outreach and Firewise Meeting will take place on **April 30th, 2025**, at 9am at [KIXE Studios](#) in Redding. Rob Sandbloom from Shasta County Office of Emergency Services and Undersheriff Gene Randall will be presenting about Disaster Preparedness.

The presentation will also be livestreamed on KIXE's Facebook and YouTube channels for those who can't attend in person.

The full agenda will be sent out in early April 2025.

We look forward to seeing you there!

Future 2025 Meetings: July 30th and Oct. 30th. Times and places to be announced.

Free Chipping

Our **Free Curbside Chipping Program** continues to make its way around the county.

March 1: *Deadline to register* for residents in Shasta Lake, Lakehead, and Castella for chipping services provided later in March.

March 1: *Registration opens* for residents in Montgomery Creek, Big Bend, and Round Mountain for chipping services in April.

Dates:

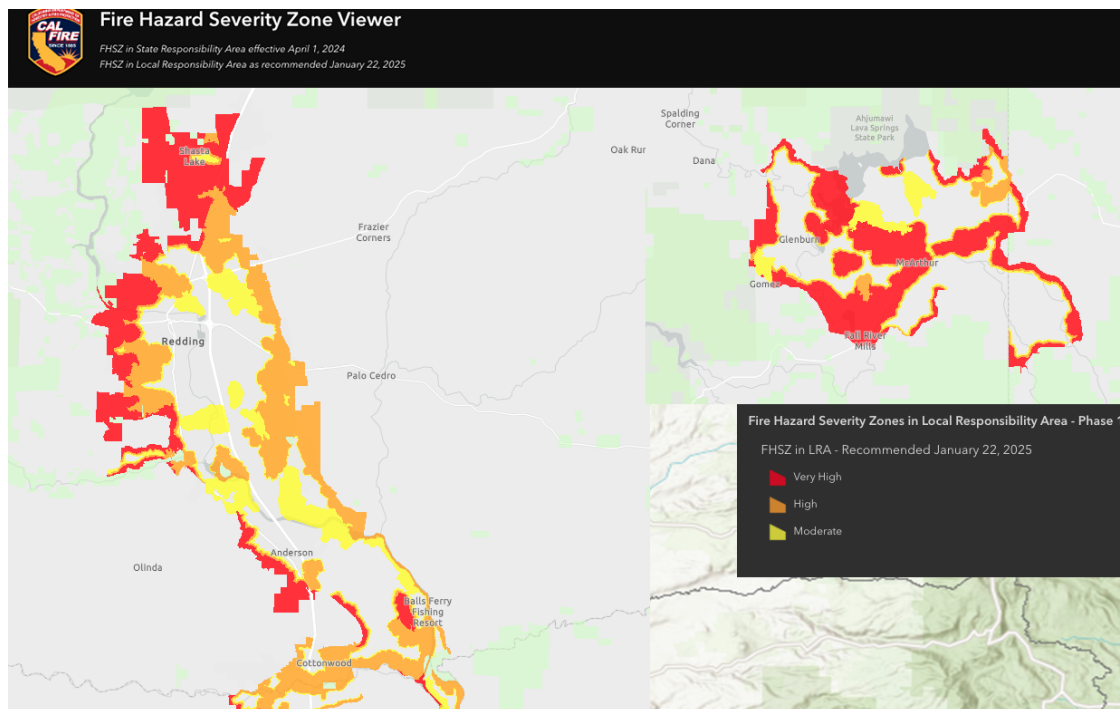
Enroll By:	Shasta County Regions:
Jan. 1	Anderson, Cottonwood, Igo, Platina
Feb. 1	Redding, Old Shasta, French Gulch, Whiskeytown
Mar. 1	Shasta Lake, Lakehead, Castella
Apr. 1	Montgomery Creek, Big Bend, Round Mountain
May 1	Bella Vista, Oak Run, Palo Cedro, Millville
June 1	Shingletown, Whitmore, Manton
Oct. 1	Burney, Fall River Mills, McArthur, Cassel, Hat Creek, Old Station

visit chipperday.com/shastafs
 or email chipper@shastafiresafe.org
 or call (530) 360-0120

Funding for this project provided by the California Department of Forestry and Fire Protection (CAL FIRE) Wildfire Prevention Grants Programs as part of the California Climate Investments Program.

For more information please visit <https://www.chipperday.com/shastafs>

If you'd like to share the flyer, it can be downloaded here: [Chipper Flyer 2025](#)



Following the devastating January wildfires in Los Angeles, Governor Gavin Newsom issued an executive order directing updates to California's wildfire risk maps for areas under local jurisdiction. The newly released maps now categorize over 1.4 million acres as "High" or "Very High" risk. Phase 1 highlights Northern California communities most vulnerable to wildfires, which includes areas of the City of Shasta Lake, Redding, Anderson, and Fall River Mills.

You can search by address on Cal Fire's interactive map: <https://experience.arcgis.com/experience/6a9cb66bb1824cd98756812af41292a0>

or view pdf maps here: <https://calfire.app.box.com/s/wahuw9ny7cgn89xpxh7092ur50r1pwvj/folder/286539800795>

Shingletown Slash is Coming Back!



2025 Schedule

▶ **Second Saturday of Each Month, May to October**
 9am to 3pm

MONTH	SATURDAY THE
MAY	10TH
JUNE	14TH
JULY	12TH
AUGUST	9TH
SEPTEMBER	13TH
OCTOBER	11TH

The Shingletown Slash Program is a free program that allows Shingletown residents to drop off brush and other slash debris at the Shingletown Solid Waste Transfer Station. The program helps keep the community safe from wildfires. Residents can drop off slash at the Shingletown Solid Waste Transfer Station on the 2nd Saturday of each month from May to October.

If you'd like to share the flyer, you can find it here: [Shingletown Slash Flyer](#)

Educational Opportunities

The California Fire Science Consortium is hosting a webinar on March 11th with Yana Valachovic, forest Advisor for the University of California Cooperative Extension, on Lessons Learned From The L.A. Fires. You can register here: https://berkeley.zoom.us/webinar/register/WN_KFVBRLXFTsGG9Z6iSRrF9Q#/registration

The California Wildfire Taskforce quarterly meeting will be March 27th and include presentations on Lessons From The LA Fires, Building Resilient Communities, and Tools for Improving Community Resilience. Zoom registration is available here: https://us06web.zoom.us/webinar/register/WN_in2nXHRwR7mjZOZ4VQjY4g#/registration

Spring Planting in Wildfire Country



Before planting this spring, here are some key factors to consider when choosing plants.

All plants will burn under the right conditions, regardless of how they are classified (“fire resistant”, “fire safe”, “firewise”, etc). Growing conditions and maintenance can have a greater impact on the flammability of plants than the species itself.

Zone 0 (within 5 feet of any building) should be free of combustible plants and mulches, planter boxes, wood piles, and wood fences.

Outside of Zone 0, here are some questions to consider when selecting plants for your home:

- **Does this plant shed bark, leaves, flowers, etc.?**

A plant that sheds bark or branches is likely to need more regular maintenance-related cleanup to reduce fuel accumulations on the ground. A plant that has a big leaf or needle drop will result in the need for more maintenance-related cleanup on the property, on the roof, and in rain gutters

- **How dense are the foliage and branches?**

A plant that is more densely structured can capture embers and may be more likely to ignite. Drooping branches will also be more likely to be easily ignited from a surface fire.

A plant that grows quickly may exceed growth expectations and require greater maintenance.

- **Does the plant have waxes, oils, or resins?** A plant with more waxes, oils, and resins will likely be more flammable and release more energy when it burns.

Our friends at the Lassen Fire Safe Council have a Landscaping Plant Guide for High Fire Hazard Areas that is available here: [Landscaping Plant Guide](#)

Plants to avoid can be found here: [Fire Hazardous Plants.](#)

The infographic illustrates three key landscaping guidelines for fire safety:

- Minimum Vertical Clearance:** Shows a tree with a 6-foot height and a 2-foot high shrub. The text states: "3 x the height of the shrub to the lowest branches of the tree".
- Tree Spacing:** Shows two trees with a 10-foot gap between them. The text lists: "Flat to mild slope: 10 foot spacing", "Mild to moderate slope: 20 foot spacing", and "Moderate to steep slope: 30 foot spacing".
- Shrub Spacing:** Shows two shrubs with a 4-foot gap between them. The text lists: "Flat to mild slope: 2 x the height of the shrub", "Mild to moderate slope: 4 x the height of the shrub", and "Moderate to steep slope: 8 x the height of the shrub".

Keep it lean and green. Keep vegetation lean, clean and green. Keep all vegetation watered, free of dead material, and maintained.

Proper plant spacing creates natural firebreaks, reducing the chances of flames jumping from one area to another. By maintaining adequate distance between plants, especially near structures, you limit fire’s ability to spread through direct contact, radiant heat, or embers.

Proposed Legislation



Federal Legislation:

The **Wildfire Emergency Act** would reduce the threat of destructive wildfires through forest restoration, firefighter training, energy resilience retrofits, and wildfire-hardening home modifications in low-income communities. This bipartisan bill would take numerous steps to ensure that the Department of Agriculture (USDA), the Department of Energy (DOE), and the Department of the Interior (DOI) are better able to mitigate the risk and impact of wildfires.

The **Fire-Safe Electrical Corridors Act** would allow the U.S. Forest Service to approve the removal of hazardous trees and other vegetation near power lines on federal forest lands without requiring a timber sale.

The **Disaster Mitigation and Tax Parity Act** would provide a tax exemption on payments from state-based programs for homeowners to proactively harden their homes against natural disasters.

<https://wildfiretaskforce.org/senator-padilla-introduces-three-bipartisan-bills-to-bolster-fire-resilience-and-proactive-mitigation-efforts/>

The **Fit for Purpose Wildfire Readiness Act** establishes a National Wildland Fire Service (NWFS) to the benefit of the boots on the ground. This new agency would consolidate all wildland fire management responsibilities from the five separate federal land management agencies (US Forest Service, Bureau of Land

<https://www.firerescue1.com/wildfire-and-wildland-urban-interface/bill-would-consolidate-federal-wildland-firefighting-resources>

State Legislation

[AB 888](#) The California Safe Homes Act would provide funding for fire-rated roofs for California residents.

[SB 616](#) The California Community Fire Hardening Commission Act would establish an home inspection commission that would revise the current wildfire mitigation program with updated community and home hardening standards.

The full press release from California Insurance Commissioner Lara can be found here: <https://www.insurance.ca.gov/0400-news/0100-press-releases/2025/release017-2025.cfm>

Know someone who might enjoy this newsletter? Forward it!

[Forward to a Friend](#)

Follow us!



Want to change how you receive these emails?
You can [update your preferences](#) or [unsubscribe](#)



Copyright (C) 2025 Shasta County Fire Safe Council. All rights reserved.

Our mailing address is: